

RG700B

THE LIGHTWEIGHT CHAMPION

RoGator[®]



RoGator[®] RG700B

CROPLANDS





RoGator[®]
RG700B

MOTHER NATURE DOESN'T WAIT. NOW YOU WON'T HAVE TO EITHER.

You know as well as anybody that the window of opportunity to apply vital nutrients or protectants to your fields can be razor thin. Spraying a bit too late can have a big impact on both crop yield and bottom line. With your own RoGator you'll take complete control over what, when and where you spray.

Our newest RoGator, the RG700B, is built with the same meticulous workmanship and durability as its legendary, professional-grade big brothers, but in a package designed specifically to deliver just the right level of power and weight for today's professional farmers.

Not only does the RG700B feel perfectly comfortable in its below 3000 litre tank class, it significantly raises the bar on what you should expect from that class.

TABLE OF CONTENTS

Engine and Drive System	4	Liquid Tank	15
Drive System	6	The Little Things	16
AWD System	7	Booms	18
Operating Scenarios	8	Track Widths	20
Chassis and Frame	10	Technology	22
Cab Access and Platforms	12	Maintenance	24
Liquid Systems	14	Specifications	26

**QUICK SPECS**

Engine	AGCO Power
Cylinders	4
Horsepower	165 (123kW) at 2100 RPM
Torque	411 ft-lbs. (558 N.m) at 2100 RPM

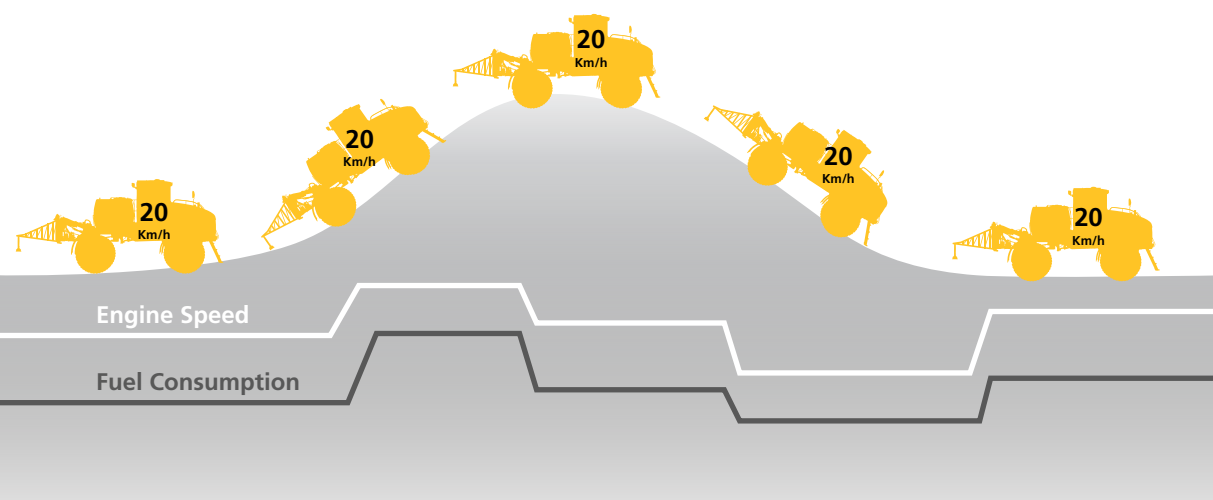
CONSISTENT SPEED. CONSISTENT APPLICATION.

The single hydrostat 110cc drive system provides infinite speed ranges, with no shifting. Because you can choose your own speed rather than having field conditions dictate speed for you, you'll always be confident that you're not under or over spraying.



AN ENGINE THAT PERFORMS MUCH LARGER THAN IT IS.

Things would be simpler if fields were always level and dry. With our powerful 165 hp engine, it'll pretty much seem that way. The AGCO Power diesel engine gives you six-cylinder performance in a four-cylinder package. You get amazing power to the ground and far more torque, which means you'll go where other sprayers simply can't, including rough, uneven terrain and soft, wet ground. You'll have no trouble maintaining consistent power and speed regardless of conditions, with more responsive handling coming in and out of corners. Not to mention impressive fuel economy. Powerfully efficient. Highly economical. Yes, it's a RoGator.



HOW DO WE DO IT?

THE SMARTEST ALL-WHEEL DRIVE SYSTEM EVER BUILT.

We designed the RG700B with the engine, hydrostatic drive and gearboxes all perfectly linked, so the entire system works smoothly together to deliver up to 20% more efficiency than other systems. But we didn't stop there. We developed a smart, no-switch operation system that does much of the work without operator input. You get consistent, steady power and easy operation, without shifting or extra work. Then, to make you as effective as can be in the field, we packed it full of standard features that others up charge you for as expensive options. You won't find a smarter, simpler sprayer that maximises your ROI by saving on fuel, protecting crops, getting you into softer fields earlier and out of fields quicker.

- **Traction Control Standard** Traverse damp fields and hilly terrain without spinning wheels or getting stuck. Crop damage is minimised, spraying is consistently accurate and you get done a whole lot sooner.
- **All-wheel Drive System Standard** Speed sensors at each wheel motor ensure that all four wheels are always turning at the same speed, eliminating wheel spinning at field approach and on soft, wet ground. Crop berming in turns is significantly reduced.
- **Smart Hydraulic System Standard** Drive pressure is kept low, which keeps the system cooler, limits engine load and extends engine life.
- **Optimised Fluid Efficiencies Standard** Hydraulic flow is meticulously controlled based on speed and terrain, and oil temperature is carefully controlled so you're always working, not overheating.

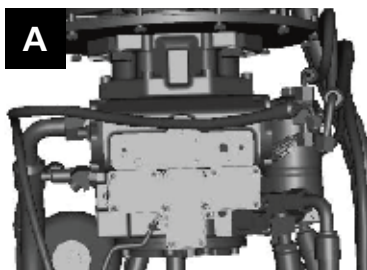
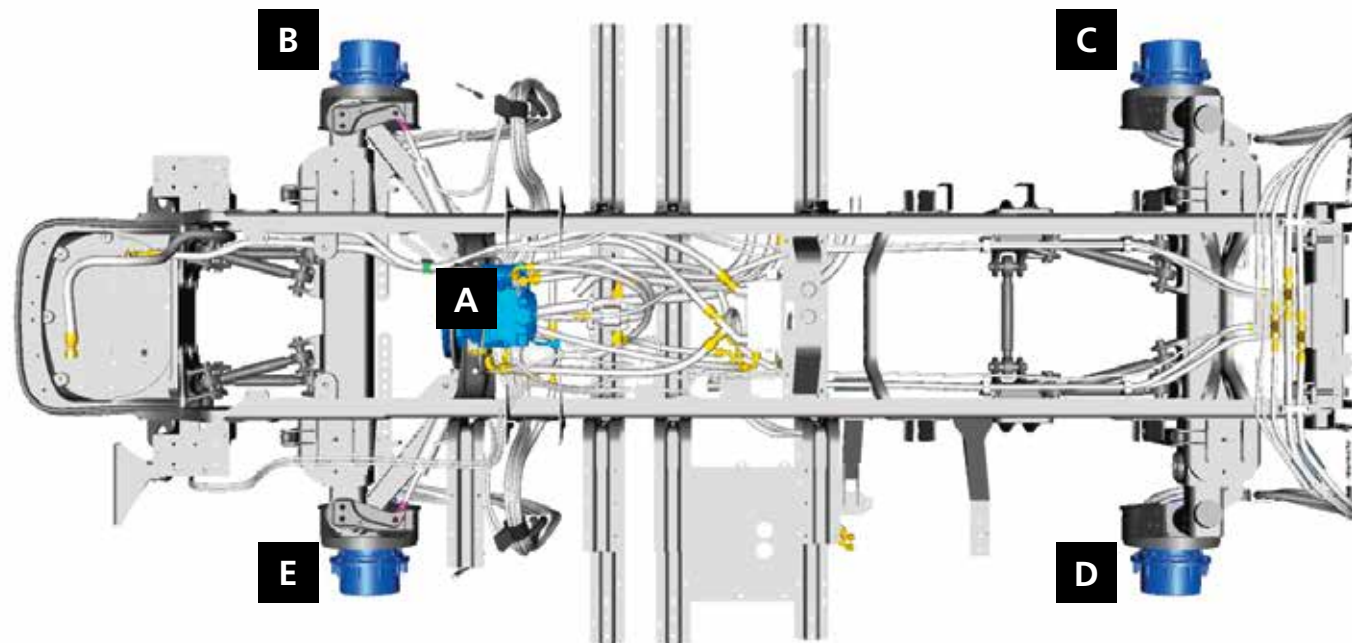


SMART DRIVE SYSTEM

The RoGator RG700B is leading the industry with a new Smart Drive System. This system will ensure the machine will go through the toughest conditions with ease, as the engine, hydrostat and drive motors all work together to minimise drive pressure and heat buildup while producing the most traction and power to the ground. The Smart Drive System maximises machine performance and minimises fuel consumption.

With the single hydrostat system this machine has plenty of power to achieve field speed quickly.

ALL-WHEEL DRIVE



SINGLE HYDROSTAT

RoGator's single hydrostat transmission is at the centre of this Smart All-Wheel Drive System. The one hydrostat transforms power from the engine into oil flow and pressure.



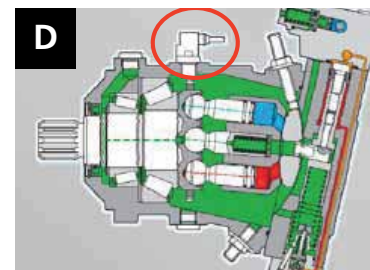
HYDRAULIC MOTOR

The hydraulic motor takes the flow from the hydrostat transmission and converts it to mechanical force going into the gear reduction hub. The hydraulic motor's displacement is electronically controlled and changes depending on the desired vehicle speed. Speed Sensors at all four corners report RPM so the hydraulic motors can match and maintain the desired speed and All-Wheel Drive System.



FINAL DRIVE

The gear reduction hub is a torque multiplier. It transmits power supplied by the hydrostat and variable-displacement hydraulic motor to the ground.



WHEEL SPEED SENSORS

Sensors at all four corners communicate RPM for the wheel speed. RPM signal is used for ground speed with product application, built-in traction control and braking.



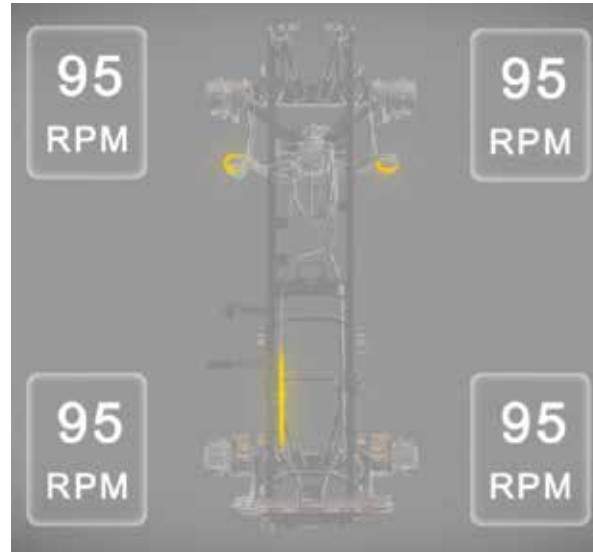
WHEEL ANGLE SENSOR

The wheel angle sensor information is used for all steering assist systems to identify front wheels position. Angle also identifies when the machine is turning for the drive system to use a differential type of logic. This allows the inside motors to turn slower and the outside to turn faster, maintaining the All-Wheel Drive System.

OPERATING SCENARIOS

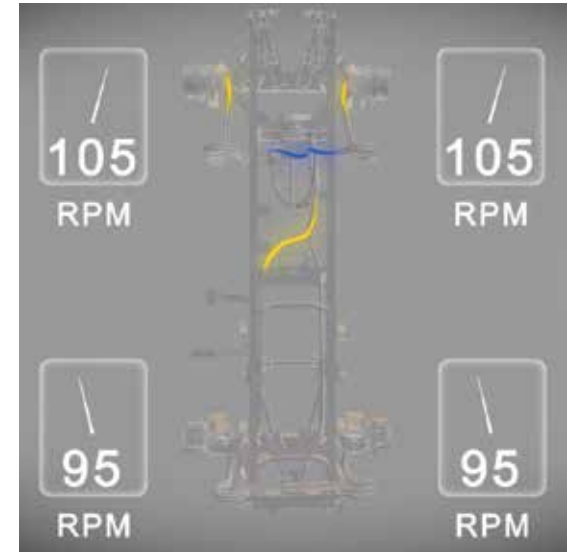


SMART DRIVE SYSTEM



DRIVING STRAIGHT

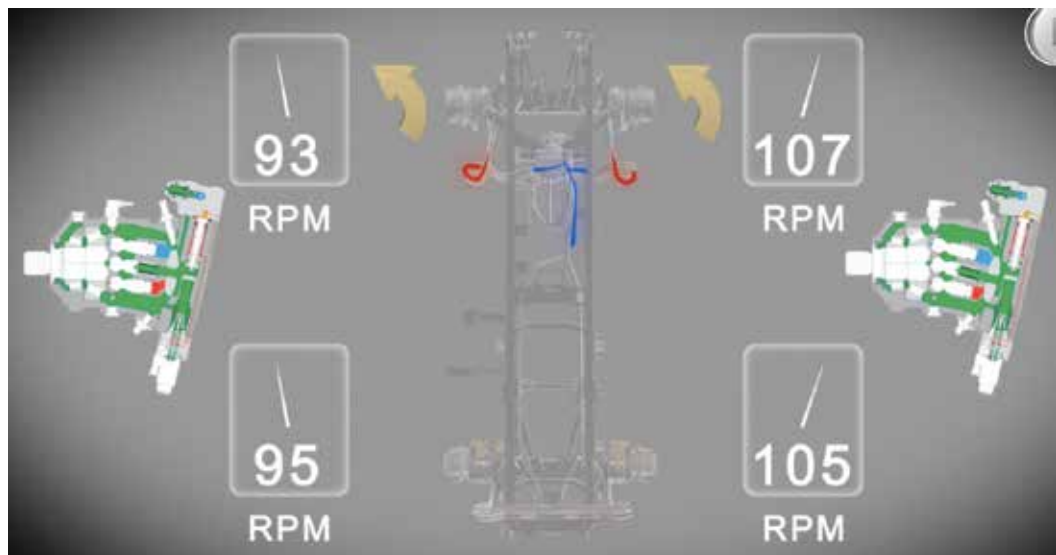
Should one or multiple wheels break loose (i.e. muddy conditions or a large hill) the speed sensor for those wheels will transmit the information to the ECU. The ECU then tells the motors that are slipping to adjust in order to maintain the All-Wheel Drive System.



TRACTION CONTROL

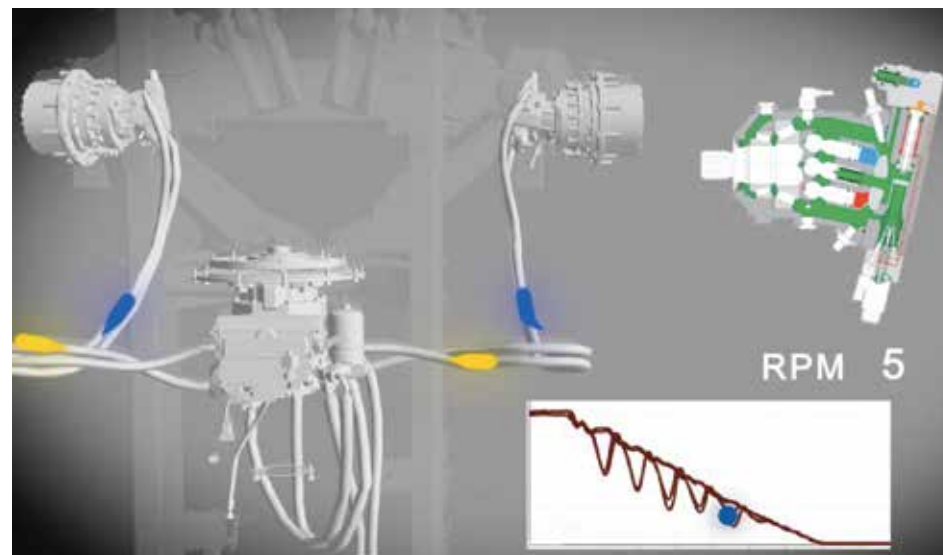
To ensure the flow is distributed equally, speed sensors at all four corners need to match readings. The speed sensors send readings back to an ECU, which then adjusts swash plate angles to ensure equal readings.

DRIVE TRAIN MANAGEMENT



KEY

- Hydraulic Back Pressure
- Hydraulic Pressure
- Electronic Signal



TURNING

As the operator turns the steering wheel. The steering angle changes and the steering angle sensor notifies the ECU of the new position. The ECU then tells the inside motors to turn slower and the outside motors to turn faster resulting in minimal ground disturbance and providing maximum crop protection.

BRAKING

Hydrostatic braking is the primary source of braking handled by the drive system.

- When the operator pulls back on the hydrostat, the swash plate in the drive motors will adjust, slowing down the speed of the machine. The pump will then start to adjust and decrease the speed further.

Brake Pedal is the secondary source of braking handled by the drive system.

- When an operator presses down on the brake pedal, initial braking is done through hydrostatic braking.
- Continuing to press on the pedal will include modulated braking to brake packs internal to the gear hubs at all four corners.

The ABS system monitors the wheel speed sensors. If it sees zero RPM, it will adjust the swash plate in the motors to allow the wheel to continue to turn. This reduces the risk of skidding.

SOLIDLY BUILT. CONSISTENTLY RELIABLE.

You've got a lot to get done each day, often physical, demanding work. We don't think spraying your fields should add to that. More than 50 years ago we pioneered the first agricultural sprayer and have been fine-tuning application equipment ever since. Not only is a RoGator built to last while providing the most accurate application anywhere, it's built from the ground up with your comfort top-of-mind. From its unique C-Channel Flex Frame to its innovative suspension system, the RG700B is engineered to put less stress on both the machine and the operator. Less wear and tear to the machine means a better ROI. Less impact to your knees, back and neck means you can work all day without feeling like you've worked all day.

- **Parallel C-Channel Flex Frames** This unique frame keeps all four wheels on the ground and driving, even on rough, uneven surfaces. Pioneered by RoGator in 1993, this system is so stable that wheels can flex as much as 14 inches (355mm) and still maintain four points of solid contact with the ground. You get a smoother, safer ride and an always-consistent application of product to the ground.



- ▲ **SUPERIOR CROP CLEARANCE** With our standard 90 inch axle, you'll get crop clearance of up to 54 inches (1.37 metres). This means less crop damage and the ability to spray taller, more mature crops. So you can use your machine longer each season, giving you even more control and a better, quicker ROI.

- **Standard Active Air Suspension System**
Our state-of-the-art Air Spring Suspension System with rear sway control enhances spraying accuracy and extends the life of the machine. You get:
 - **A Smoother Ride** Comfortable for the operator, plus consistent boom height position for more accurate spraying across the field.
 - **A Constantly Adjusting Ride As Load Diminishes** Keeps booms level, with far less wear and tear.
 - **Constant Wheel-to-Ground Contact**
 - **Straight, True Steering** With better shock absorption and less vibration, the machine stays in the row, further minimising crop damage.
 - **Reduced Maintenance** Less wear and tear means less maintenance, longer life and better resale value.

BALANCED WEIGHT DISTRIBUTION

With its long wheel base (150"/3.81 metres) and 50/50 weight distribution – when half loaded and booms unfolded – the RG700B travels smoothly over uneven terrain, with less field compaction and much less wear and tear on the booms. Not to mention a smoother, more comfortable ride for the operator.





A CAB BUILT JUST FOR APPLICATION. HARD TO BELIEVE NO ONE ELSE HAS THOUGHT OF THIS.

We've been crafting and refining application equipment for nearly 50 years. Today, RoGator is still the only sprayer in the industry with a cab built specifically for application use. Sight lines are amazing, with a panoramic view that provides almost 360-degree visibility. A unique positive air pressure and filtration system constantly forces air out from the cab, so chemicals and odours can't get inside, even when the heat or AC is not running. If you've got to spend a long day spraying, you won't find a more comfortable, protected or quiet place than this from which to do it.





COMFORTABLE, SMART ARMREST AND JOYSTICK OPERATION

The ergonomically designed joystick is built so the operator can intuitively control all functions for field operations by feel, not by sight. Because there's less need to move hands and eyes for various functions, operation is simpler and safer. Focus on the job is improved and the operator is less tired at the end of a long day.



BETTER ROAD VISIBILITY

The RG700B cab is designed for enhanced road visibility when travelling between fields or on surface roads. Folded booms rest below the operator's sight lines for clear visibility to the road on both sides.

BUILT WITH OPERATOR COMFORT AND SAFETY TOP-OF-MIND

- **Unmatched Visibility** The 6-post cab design provides open, curved corners for unmatched visibility with less stress and strain on the operator. With just a glance, the operator can see;
 - Boom tips when outlining a field
 - Nozzles to ensure consistent application or make sure nothing is plugged
 - Tyres in the row
 - Headland turns
 - Unexpected obstacles
- **Fresh Air. Always.** The RG700B comes with three cabin air filters to keep the good air in and the bad air out. Chemicals are virtually eliminated from the cab for a safer, more comfortable operating environment.
 - Dust and Debris Filter – Keeps the big stuff outside where it belongs
 - Carbon Filter – Removes chemicals from the air before the air gets into the cab
 - Recirculation Filter – Continually filters air recirculated by heat or AC systems
- **RoGator Management Centre (RMC) Standard**
The RMC allows fingertip control over virtually all operational functions, including:
 - Engine and drive status
 - Liquid system operation
 - Foam marker
 - Boom height control
 - Time-delay lighting

PROFESSIONAL-GRADE SYSTEM. NO PROFESSIONALS REQUIRED.

Don't worry. Even though our liquid system comes with the same, legendary workmanship as our professional-grade machines, this new RoGator is built for your operation. Easier to operate than the competition, the RG700B comes with a smart, efficient system designed for simplicity and productivity. Because you get outstanding product control whether you're spraying at a low or high volume, you'll always get more done in less time.

THE BEST RELOAD PLUMBING IN THE BUSINESS

The less time you spend reloading, the more time you spend spraying. And the faster you get the job done. That's why we've designed the most direct, ergonomically smart system you'll find.

- **Compact Reload Station** Everything's close at hand so you make fewer movements during reloading. With far fewer valves to manage, you stay in virtually the same spot for the entire reload. The process is simpler, quicker and safer.
- **The Shortest Distance Between Two Points** The RG700B uses a direct path from the fill area to the pump and the pump to the tank. This means more efficient product flow, reduced product build-up and much cleaner transitions between products. Others use a far less direct path with multiple "L" turns, resulting in slower and potentially contaminated loading.
- **Optional End Row Nozzles** Includes both the left AND right side end nozzles, which can cost hundreds less than just the one nozzle on competitive machines.





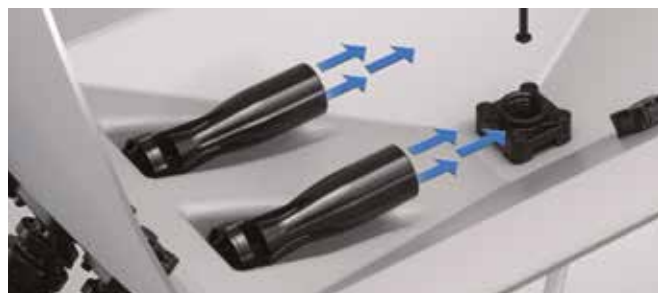
TOTAL TANK LEVEL VISIBILITY
With both an external site gauge for reloading and an in-cab tank-level sensor, you'll always know just how much product you have in the tank.

A TANK SHOULD BE MORE THAN JUST A TANK.

When it's time to spray, you need to get the job done fast and right. Our 700 gallon (2,650 litres) tank means more time spraying, less time reloading, with tank technology professionally proven under the most gruelling conditions. From our easy top-of-tank access to an agitation system that delivers consistently mixed product whether the tank is full or almost empty to a rinsing system that ensures that new loads aren't contaminated with old product, the RG700B is unlike any other sprayer you can own.



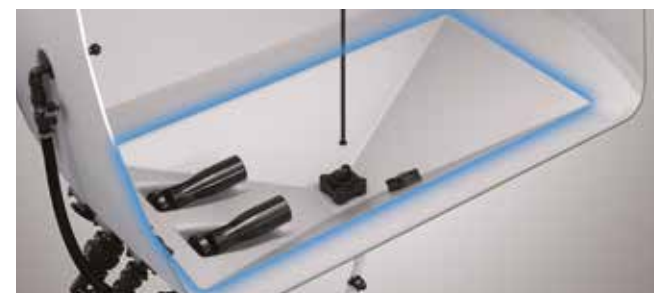
ROUND TANK
Comes with a rounded bottom for ultra-consistent mixing. Others use square-bottom tanks that trap product in corners for a less-consistent mix and unwanted residue.



Superior Agitation Two large jets at the tank bottom deliver consistent product agitation. Jets are designed to limit anti-vortex action and significantly reduce pump cavitation and foaming. You get the most consistent mix with a quiet operation and less component wear and tear.



Superior Rinsing
Three rotating rinse nozzles in the on-board rinse tank provide more direct, efficient rinse water to the tank. Rinse pattern is designed for more thorough cleansing with less water.



Double Taper Sump Drainage runs to the centre of the tank ensuring that all product is pulled from the tank. No waste or residue from previous product is left behind.

You're in Control Agitation control is fully adjustable from the reload station, and on/off is conveniently controlled right from the cab as product load is reduced.



MY LAND. MY ROG

WIDE PLATFORMS Our platforms are built wider for easy access from the cab to the tank. Which makes for simpler, safer reloads and routine maintenance.

LEFT-SIDE REFUELLING
Convenient access for less downtime.

65 GALLON (246 LITRE) FUEL TANK Run a 12 hour day on just one tank of fuel. It's less hassle, less downtime when you don't have to head back to the shop to refuel.

TIP-TO-TIP ACCURACY
More direct plumbing with the fewest possible "L" turns means even distribution and pressure for consistent flow across the boom.



ATOR.

**ATTENTION TO THE SMALLEST DETAILS
MAKES THE BIGGEST DIFFERENCE.**

SHORT FIRST STEP The first step of our ladder is built lower for safety and easy access.

UP TO 48 KM/H ROAD SPEED Quicker transport means more time spraying.

CAMERA-READY RIGHT FROM THE FACTORY While operating, monitor a live feed from outside the RoGator right inside the cab.*

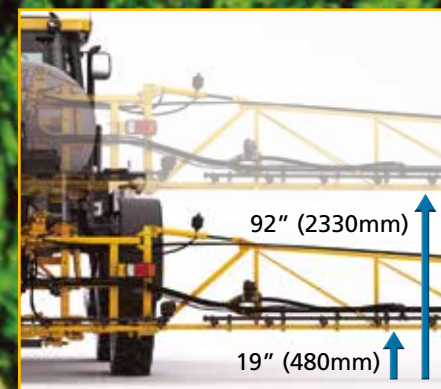
FENDERS STANDARD Protect nozzles from flying debris, as well as the rest of the machine from chips and scratches.

*Requires only the additional AGCO Camera and Cable Kit to activate. Available through AGCO Parts.



FULL-BOOM AND TIP BREAKAWAY Both standard on the RG700B; others offer only tip breakaway. The full boom swings back and up to clear an obstruction, providing complete boom protection. In addition, a sophisticated shock absorber system not only controls the rebound but also absorbs inertia in everyday usage, significantly increasing boom and tip longevity.

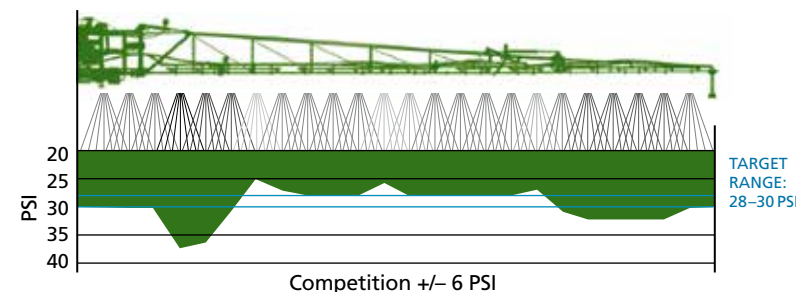
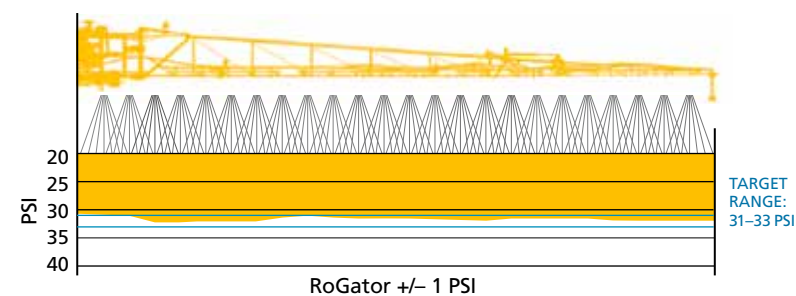
VARIABLE BOOM HEIGHT ADJUSTMENT
Adjust boom height from 19 inches off the ground to 92 inches for more spraying options and a much longer spraying season.



BETTER BOOMS. BETTER NOZZLES. BETTER HARVEST.

This isn't just any sprayer. It's a RoGator. You get stronger, more durable booms that don't add excess weight, so you glide through fields. A state-of-the-art boom breakaway system for those unexpected field obstacles. And professional-grade plumbing that minimises the chance of plugged nozzles and delivers the most accurate spraying anywhere. But most of all, you get consistently even growth and a maximised harvest.

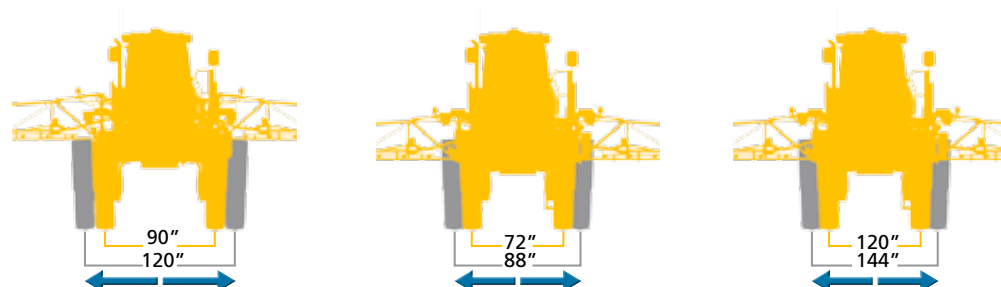
- **Industry-proven Boom Design** One inch square tubing on the tips is strong and lightweight. Lightweight cross-member rods further ensure structural integrity.
- **3-Nozzle Rotary System Standard** Our standard system gives you the flexibility to spray at different rates from the same nozzle base. Adjust all nozzles in less than five minutes, far less time than it would take to swap out new nozzles.
- **Two Boom-width Options** Choose 60/80 feet (18/24 metres) or 60/90 feet (18/27 metres). Each comes with five or seven sections, so you can customise your spraying to manage unique field boundaries and crop conditions. Combine the 90 foot boom with the 700 gallon tank to cover the most ground before refilling.



- ▲ **The most consistently accurate spraying in the business.** From tip to tip across the boom, the RG700B has only a +/-1 PSI difference, while competitors can be up to six times that much. We use two levels of filtration – strainers on both the end line and the boom line – as well as the fewest 90-degree elbows and T-fittings possible, so product always flows smoothly with limited pressure drops. Product is applied evenly across the booms for consistently lush, clean fields.

TRACK WIDTHS TO RUN THROUGH ANY ROW, ANY CROP

Not all fields and rows are created equal. That's why RoGator sprayers are purpose-built to move quickly and easily through a wide variety of rows, crops and field conditions. That's also why we give you three different track-width options from which to choose. So you can choose the RoGator that's just right for your operation. Then, once you've chosen your RoGator, you can fine-tune track widths even further to customise your application for different crops, different rows, different seasons.



THREE TRACK WIDTHS AVAILABLE

	STANDARD TRACK	NARROW TRACK	WIDE TRACK (indent)
Track Width	90–120 in. (2.28–3.04 metres)	72–88 in. (1.82–2.23 metres)	120–144 in. (3–3.6 metres)
Ground Clearance	54 in. (1.37 metres)	48 in. (1.21 metres)	54 in. (1.37 metres)
Height to Top of Cab (Operational)	157 in. (3.98 metres)	153 in. (3.88 metres)	157 in. (3.98 metres)
Overall Width With Liquid System	126 in. (3.2 metres)	126 in. (3.2 metres)	126 in. (3.2 metres)
Overall Chassis Length (Liquid System)	339 in. (8.6 metres)	339 in. (8.6 metres)	339 in. (8.6 metres)
Wheel Base	149 in. (3.78 metres)	149 in. (3.78 metres)	149 in. (3.78 metres)

- **Adjust Widths in Small Increments** To set precisely the right width for your rows, manually adjust track widths in 2 inch increments. Simply move the track pins in the track adjust bar, and use the track adjust switches near the console.
- **Variable Front/Rear Widths** Set front and rear wheels at different widths to help minimise compaction or crop damage.
- **Optional Hydraulic Feature** An optional hydraulic adjust feature is available on the 90–120 inch (2.28–2.04 metres) model.



FIELD LIGHTING Lighting packages in halogen or High Intensity Discharge (HID) are for those times when you've got to be in the field before the sun comes up or you have to burn the midnight oil. Lighting packages are available to light the booms, as well as areas around the chassis, catwalk and tank.

IT'S YOUR ROGATOR. ADD A FEW BELLS AND WHISTLES.

From lighting options that enhance safety or let you work at odd hours, to options that help protect crops from damage as you run through your fields, we offer a range of add-on items to fit your operational needs or your style.



CROP DEFLECTORS

Gently move foliage from the path of tyres and suspension components to reduce crop damage.



Rotating Amber Roof Beacon Enhance safety with better machine visibility day or night. In the field or on the road. (Standard)



Weather Stations Generate real-time field weather data for reporting, including apparent and true wind speed and direction, GPS course and speed, air temperature, relative humidity, dew point and barometric pressure. (Optional)



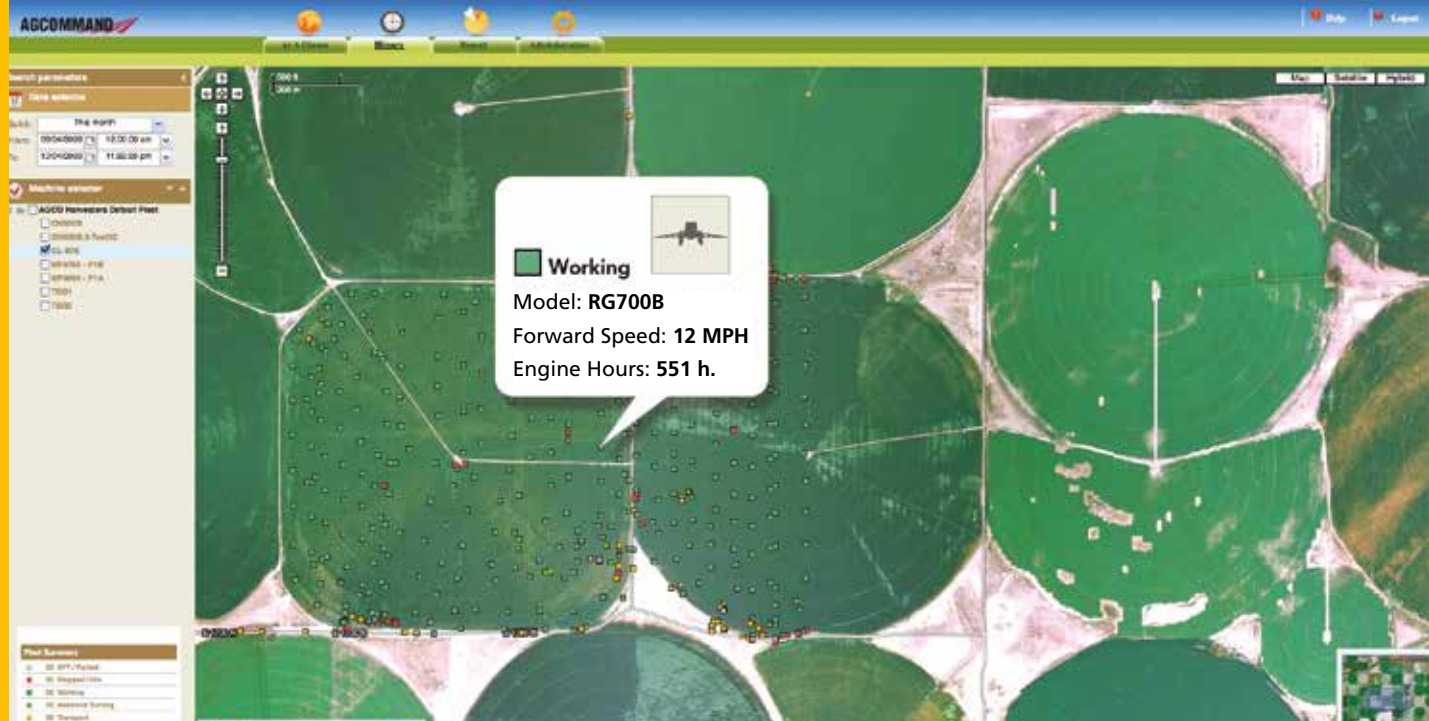
Slingshot®-ready The RG700B comes pre-wired for Raven's Slingshot, a precision ag innovation that wirelessly connects every square inch of your land to a set of intuitive online tools and premier hardware. (Not pictured) (Optional)



26 Litre Chemical Hopper Chemical is drawn up into the line that carries product into the bottom of the tank, reducing the chance of foam. (Standard)

AGCO EASY-TO-USE TECHNOLOGY BUILT RIGHT IN.

You may choose to have your new RoGator factory-outfitted with an array of precision-farming and data-recording technology. This lets you know where your machine is at any given moment, how it is performing and how efficiently the machine is being used. So you can efficiently manage uptime, maximise productivity and increase profitability.



AGCONTROL™

This easy-to-use information centre is one of the best controllers on the market today. It uses keys on both sides of the screen, as well as a scroll wheel. Simple menus that use intuitive icons make it easy for almost anyone to master.



- Controls straight rate product with the ability to create job reports for fast, easy document reporting.
- Optional section control can be run through this console for better product control with only one console in the cab.
- PWM Control to manage the speed of the product pump.
- Controls both low and high rates with just one system and no major alterations to the machine.
- 7.5 inch colour LCD display features crisp images and easy-to-read type. It can be brightness-adjusted for day and night conditions.

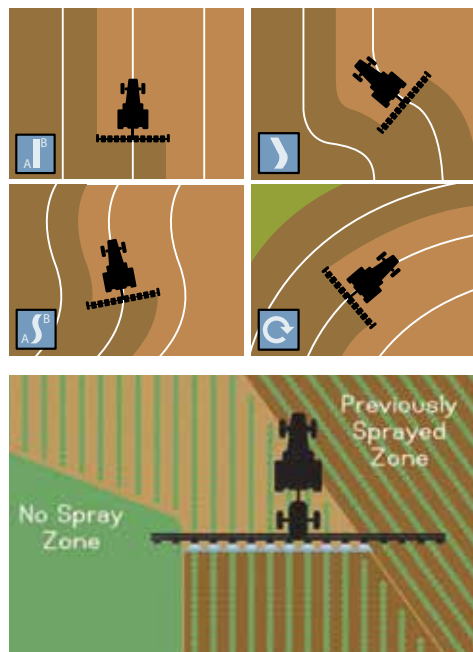
AGCOMMAND™

The standard-equipment AGCOMMAND telemetry system helps you increase productivity by optimising machine and operator performance. You'll have near real-time detailed monitoring capability that lets you know exactly where the machine is, how well it's performing and how efficiently it's operating. You'll no longer have to manually collect machine data for analysis and reporting. The AGCOMMAND system uses automatic data recording and transfer technology, ensuring that data is transferred from the machine to a secure storage server every 10 seconds. You simply access the information from your desktop computer, laptop, tablet or smart phone app.

- Always know where your RoGator is and what it's doing.
- Proactively receive text or e-mail alerts when service or maintenance is required, or if there's unusual, unplanned equipment activity. (You may choose to have your dealer receive some of these, as well.)
- Map the RoGator's working history.
- Collect in-depth machine data on location, performance, engine hours and fuel consumption.
- Set Geo-Fences that establish boundaries for spray routes, track machine movement and maximise efficiency.
- Generate efficiency reports to help improve future machine and operator performance and minimise downtime.
- To further improve efficiencies, you also have the option of providing your dealer with access to machine information, allowing them to anticipate upcoming maintenance or schedule a service call.

OPTIONAL TECHNOLOGY THAT MAKES YOUR ROGATOR EVEN SMARTER.

Your new RoGator can be further enhanced with a wide range of field-tested, industry-proven technology options. They'll help make you more precise in your farming, more accurate in your product placement, more productive in your business and, quite likely, more profitable at the end of the day.



Assisted Steering System Hydraulic-assisted steering systems enhance high-speed operation by offering easier, more relaxed driving. Choose from different operating modes to fit the profile of the field — Straight A-B, Contour or Pivot. SmarTrax™ from Raven for 3D terrain compensation and automatic system calibration.

Boom Section Control Enables automatic individual boom section control, so you can set up non-spray zones and field boundaries to eliminate wasteful overlaps and minimise operator fatigue. Savings can be as much as 15% depending on field shape and acreage. Choose Section Control from AGCO or AccuBoom® from Raven.



Field Computer The Raven™ Viper™ 4 field computer, mounted to the right “A” pillar, is a highly capable controller, delivering the ultimate combination of operating power and program capabilities. Features like ten-product VRA and application reporting, including real-time data mapping and record keeping. With extra hardware, these units can handle multiple system functions, including Raven AccuBoom™ and AutoBoom®.

- Horizontal or vertical orientation
- Sleek design with 12.1” responsive touchscreen and intuitive, tablet-like interface and state-of-the-art rugged magnesium alloy enclosure
- Dustproof for tough environments
- 4 camera inputs for monitoring bin levels, blind spots, roadway operation and more
- Integrated, fully scalable GPS receiver
- Customisable user interface
- Set up machine and product profiles
- ISOBUS compatible
- Wireless over-the-air software updates
- Wireless data transfer capability
- VT with task controller capabilities
- On-screen implement location with section stat



RAVEN

Boom Height Control These unique systems use sensor data to make automatic, responsive height adjustments that allow booms to follow the contour of the land. Accuracy is ensured because spray height is always consistent. The AutoBoom® from Raven is a superior system.



SGR-1



Phoenix 300

Receivers You may choose from several receivers, based on your operational needs. These rugged receivers can be used for moving map displays or assisted-steering systems. Select receivers can be upgraded to HP/XP and RTK accuracy. Select from:

- SGR-1 (Mapping)
- Phoenix 300 (Steering)

EXTENSIVE DEALER NETWORK

RoGator sprayers are sold and serviced through prominent local dealers. These dealers are committed to helping you find the right equipment for your unique needs and budget. They are also committed to providing quick and courteous post-sales service, whether it's routine maintenance or emergency mobile support. To find the dealer nearest you, please visit www.croplands.com.au



BUILT SO YOU CAN DO THE ROUTINE STUFF RIGHT IN YOUR SHOP

We know you like to save wherever you can. That's why RoGator is built with you at heart. Easy-to-access service points make it easy to do routine maintenance on your own, with less hassle and less downtime. On your time.

- A** 3 Easy-Access Cab Air Filters
- B** Easy-Access Hydraulic Oil Change
- C** Easy Dump Air System (Quickly dump and refill air bags for transporting)
- D** Swing-Out, Easy-Clean Coolers
- E** Radiator
- F** Overflow Tank
- G** Engine Air Filters
- H** Oil Fill and Dipstick
- I** Fuel Fill
- J** Storage Cabinet





RG700B SPECIFICATIONS

ENGINE

Make	AGCO Power
Number of Cylinders	4
Horsepower	165 (123 kW) at 2100 RPM
Peak Horsepower	173 (127 kW) at 1900 RPM
Displacement	299 cu. in. (4.9 litres)
Torque	411 ft.-lbs. (558 N.m) at 2100 RPM
Peak Torque	544 ft.-lbs. (738 N.m) at 1500 RPM

SUSPENSION

Type	Air Spring with Torque Rods and Shock Absorbers
------	---

HYDROSTAT

Make	Bosch Rexroth
Displacement	6.71 cu. in. (110 CC)
Charge Pump Displacement	1.89 cu. in. (31 CC)

HYDRAULIC MOTOR

Make	Bosch Rexroth
Displacement	3.78 cu. in. (62 CC)

GEARBOX

Make	Bosch Rexroth
Gear Reduction	22.6:1

SPEED

Field	0–18 MPH (0–28 kph)
Road	0–30 MPH (0–48 kph)

BRAKES

Primary	Hydrostatic Dynamic Braking
Service	Hydrostatic Dynamic Braking and Hydraulically Applied Disc Brakes in Gearboxes
Parking	Spring-Applied Disc Brakes In Gearboxes

WEIGHTS (With 60/80 ft. Boom, Full Fuel and Hydraulics)

Standard 90 in. Axle	19,500 lbs. (8,845 Kg)
Optional 72 in. Axle	19,000 lbs. (8,618 Kg)



APPLICATION CAB

Glass Area	54 sq. ft. (5.04 sq. metres)
Floor Area	9.5 sq. ft. (0.89 sq. metres)
Standard Radio	AM/FM, CD, Weather Band, MP3
HVAC	Automatic Temperature Control
Filtration	Three-level with Carbon
Steering Wheel	14 in. (3) Spoke
Standard Seat	Air Ride Cloth Seat

LIQUID SYSTEM

Tank Size	700 gal (2,650 litres)
Rinse Tank	65 gal (246 litres)
Pump	Hypro 9303
Booms	60/80 ft. and 60/90 ft. (18/24 metres and 18/27 metres)
Plumbing	Polyethylene
Spacing	10 in., 20 in.
Sections	5
Reload Valve Size	2 in. Standard, 3 in. Optional
Pressure Strainer	32 Mesh
Boom Height Adjustment	2-position combine for either 17–90 in. or 19–92 in., based on axle type
Tip Breakaway Width	(80 ft. Boom) 14 ft. (4.2 metres)
Tip Breakaway Width	(90 ft. Boom) 19 ft. (5.7 metres)
Full-Boom Breakaway	Mechanical

CONTROLLERS

Standard	AGCO AGCONTROL
Optional	Raven Viper 4

FLUID CAPACITIES

Fuel	65 gal (246 litres)
Hydraulic Reservoir	36 gal (136 litres)
Engine Oil	3.03 gal {12.12 qt} (11.4 litres)
Engine Coolant	6.5 gal {26 qt} (24.6 litres)
Windshield Washer Reservoir	1.6 qt (1.5 litres)
Gearbox	1.16 qt (1.1 litres)

Croplands Equipment has been in the business of manufacturing spraying equipment since 1972. Croplands know a good sprayer when they see one, and as such are proud to be associated with the RoGator self propelled machines. Before delivery each RoGator machine is thoroughly tested and modified to suit the demanding conditions of the Australian environment, so that you can be sure your machine will not only do the job, but do it like a pro.



At Croplands Credit, we understand that financing is as much a part of your purchase decision as the features and benefits of the product. So we're committed to providing the best means of acquiring the equipment you need.

See your authorised RoGator dealer for:

- Competitive Rates
- Comprehensive Financing
- Flexible Payment Schedules
- Flexible Terms
- Quality Service
- Leasing Options

Parts and Service for your Application Equipment

Croplands have parts and service mapped out – literally. Throughout Australia and New Zealand, our dedicated parts and service dealer network is ready and available with strategically located facilities to expedite your parts requirements as efficiently as possible. Add to that trained service technicians and service vehicles that are on call to handle maintenance and repairs. Not to mention the best warranty in the business.

Faster service. Better parts availability. More Efficiency.

Specifications, standard and optional equipment on products change from time to time. Please consult your local dealer to ensure your expectations are matched by the product which will be available locally at the time you take delivery.



RoGator® is a worldwide brand of AGCO Corporation.

NATIONAL SALES AND SUPPORT

National Sales Manager

Jeremy Rennick 0409 065 994

NORTH

Territory Managers

QLD/NT

Rob Graham 0409 597 462

SOUTH AND CENTRAL QLD

Michael Clarke 0428 311 831

SOUTH QLD/NORTH NSW

Daniel Gall 0407 485 569

CENTRAL NSW/TAS

Dave Farmer 0427 651 971

SOUTH

Regional Manager

Steve Ross 0417 832 784

Territory Managers

SOUTH NSW

David Hamilton 0427 975 072

VIC

Steve Ross 0417 832 784

SA

Dean Lawler 0409 899 491

WEST

Regional Manager

John Griffiths 0407 132 746

Service Manager

Malcolm Reck 0438 134 135

Croplands Australia

Telephone 1300 131 513

Fax 07 4641 3444

Email sales@croplands.com.au



www.croplands.com.au

© 2012 AGCO Corporation. AGCO® and RoGator® are registered trademarks of AGCO Corporation. CAT® is a registered trademark of Caterpillar, Inc. AGCO Corporation has a corporate policy of continuous product improvement and development; therefore, specifications are subject to change without any advance notice. AGCO Corporation is not responsible for differences between the specifications or illustrations contained in this publication and the actual equipment. Equipment produced by other manufacturers is shown in photographs in this brochure for the purpose of illustration only and is not intended as an endorsement of that particular equipment or its suitability. All rights reserved. AGCO Corporation, 4205 River Green Parkway, Duluth, GA 30096.